

- B. Demonstrably namable (to be named upon demonstration of the nature of the variation).
1. Varieties (recurrent discontinuous variations in a single interbreeding population).
 - a. Name proposed in ternary or quaternary form, rather than trinomial or quadrinomial, with interposition of a comma and explanatory term (*Alpha alba*, var. *maculata* Smith; *Alpha alba catalinae* var. *nigra* Jones).
 - b. Name has no nomenclatorial status under the Code and is hence available for repeated use in the same genus for parallel types of variation (*Alpha alba*, var. *maculata* Smith; *Alpha beta* var. *maculata* Jones).
- C. Unnamable (to be designated by standard terminology or symbols but not by scientific names).
1. Alternate generations (*Alpha alba*, agamic form; *Alpha alba*, bisexual form; etc.).
 2. Castes (*Alpha alba*, soldier; *Alpha alba*, ergate; *Alpha alba*, ♀ deālate; *Alpha alba* ♂; etc.).
 3. Polymorphic forms (*Alpha alba*, minor ♂; *Alpha alba*, major ♂; *Alpha alba*, brachypterous ♂; *Alpha alba*, fundatrix; *Alpha alba*, migrant; etc.).
 4. Seasonal forms (*Alpha alba*, vernal form; *Alpha alba*, Brood I; etc.).
 5. Pathological forms (*Alpha alba*, phthisogyne; *Alpha alba*, mermithogyne; etc.).
 6. Continuous variations within a single interbreeding population.
 7. Freaks and teratological specimens.

A New Species of *Psychoda* from New York (Psychodidae, Diptera)

By WILLIAM F. RAPP, JR.

Dr. C. H. Curran of the American Museum of Natural History recently turned over to me some undetermined Psychodidae

which were in the collection at the Museum. Among the specimens was one apparently undescribed species from New York.

***Psychoda angustafona* new species**

Male.—Antennae thin, gray-haired, no prominent terminal knob (fig. 1, a); face and occiput black, the front with gray hair. Palpi short, with gray hair. Thorax with dense gray hair except on the scutum where there are only a few hairs. Legs brownish black in color, with scattered gray hairs. Abdomen black with gray bands at the segmental lines, dorsum not too thickly clothed with hairs, sides thick with gray hairs.

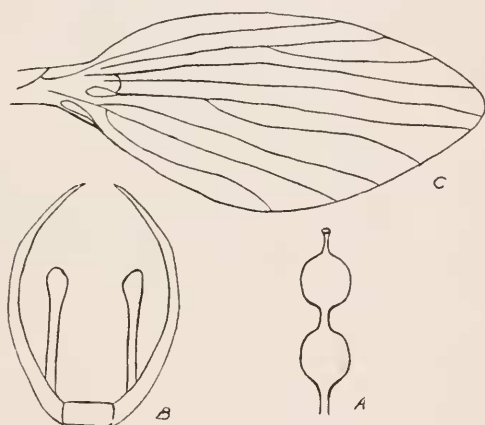


FIG. 1. *Psychoda angustafona* n.sp. a. antenna, b. claspers, c. wing.

Claspers prominent (fig. 1, b), black, tips grayish, outer edges with gray hairs. Wings with scattered gray hairs, base of wing narrow (fig. 1, c). Length of wing 1.75 mm.

Female.—Same as male in appearance, genital segment with a prominent spine, brownish with a black tip.

Types.—Holotype, male, allotype, female, paratypes, eleven males and fifteen females, North Greece, Monroe County, New York, May 1, 1936, all collected by R. L. and A. W. Post. The types are in the American Museum of Natural History.

This species may easily be recognized by the terminal part of the antenna.